

JIM BLYDE'S REPORT NOVEMBER 2013

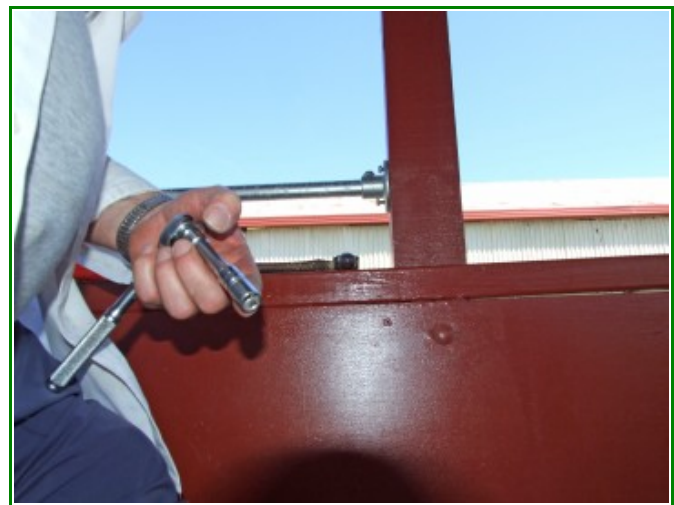
- 1 -

My hours worked so far ;- 7
N^{ak} 6078 Hand Rails.

As Noel had made up some “duckboards” this then made the wall a bit low to be safe. The wall had to be about a meter off the floor. This constituted to install a hand rail above the wall.

The rail started at the first posts beside the two openings then carried on towards the carriage and around to the gangplank.

The materials is of 20mm galvanized pipe with flanges that are grub screwed to the pipe and secured with two 60mm tek screws per flange between the posts.



JIM BLYDE'S REPORT
NOVEMBER 2013

